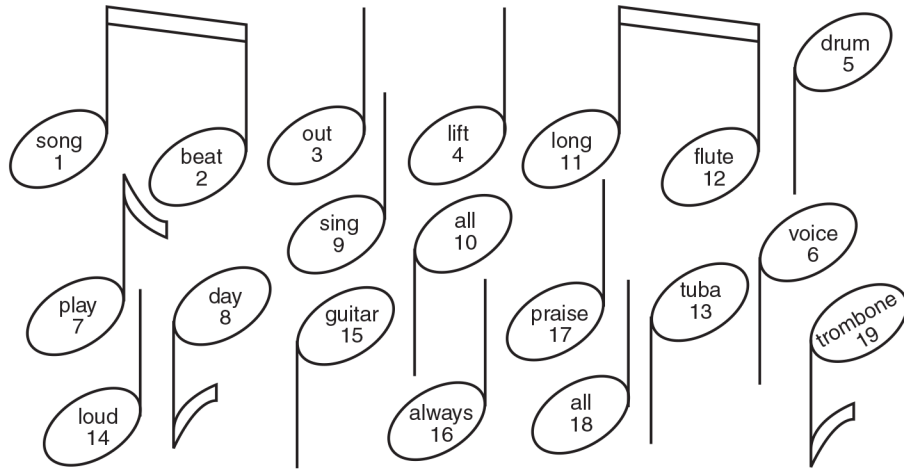


A new song of praise!

On the lines, write the words from the notes on the lines to complete the song. Sing to the tune of "Twinkle, Twinkle, Little Star."



9 or 7 a 1 of 17.

9 3 14, and 9 16!

4 your 6 in 17 and 1;

2 a 5, 7 10 8 11!

19, 13, 12, 15 —

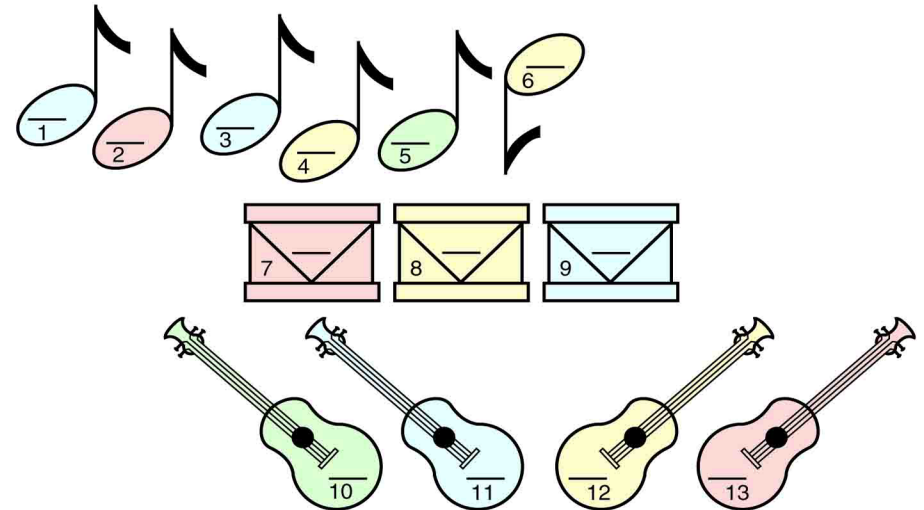
9 and 7 with 18 you are!

Ages 7+

August 17, 2025 • Psalm 150:1-6

A Psalm of Praise

Write the words on the lines and transfer to shapes above.



Bright color 12 6 13

Make music with your voice 5 4 —

Not quiet! 10 11 13

Joyful 3 1 —

Where you keep love 8 9 2 7

Enter your **SECRET CODE** to unlock games @ games.childrensbulletins.com

SECRET CODE!
CJ6135

Psalm 150 says ...

Use the code to find out.

A B C D E F G H I J K L M N O P Q R S T U V W X Y Z
Z Y X W V U T S R Q P O N M L K J I H G F E D C B A

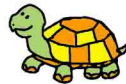


“ O V G

V E V I B G S R M T



G S Z G



S Z H

Y I V Z G S

K I Z R H V



G S V

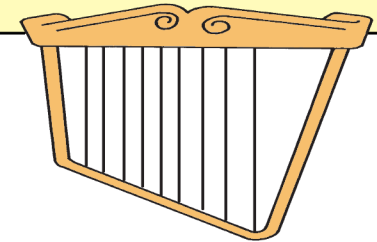
O L I W !”



The Psalm tells us many things to use to praise the Lord.

Find those things and some others in the puzzle. There will be 13 uncircled letters. Write them in order to find a message.

| | | | | |
|---------|------------|---------|----------|----------|
| violin | tuba | drums | keyboard | clap |
| trumpet | tambourine | flute | guitar | horn |
| harp | dancing | cymbals | piano | organ |
| banjo | singing | bells | lyre | trombone |
| strings | oboe | | | |



| | | | | | | | | | | | | |
|---|---|---|---|---|---|---|---|---|---|---|---|---|
| T | T | S | I | N | G | I | N | G | P | B | S | R |
| A | R | G | C | H | L | F | A | N | I | A | M | H |
| M | O | U | Y | A | Y | L | S | I | E | N | U | O |
| B | M | I | M | R | R | U | P | C | S | J | R | R |
| O | B | T | B | P | E | T | I | N | G | O | D | N |
| U | O | A | A | T | E | E | A | A | N | T | A | B |
| R | N | R | L | H | U | T | N | D | I | G | C | E |
| I | E | E | S | L | O | B | O | E | R | O | L | L |
| N | V | I | O | L | I | N | A | O | T | R | A | L |
| E | K | E | Y | B | O | A | R | D | S | D | P | S |

_____!